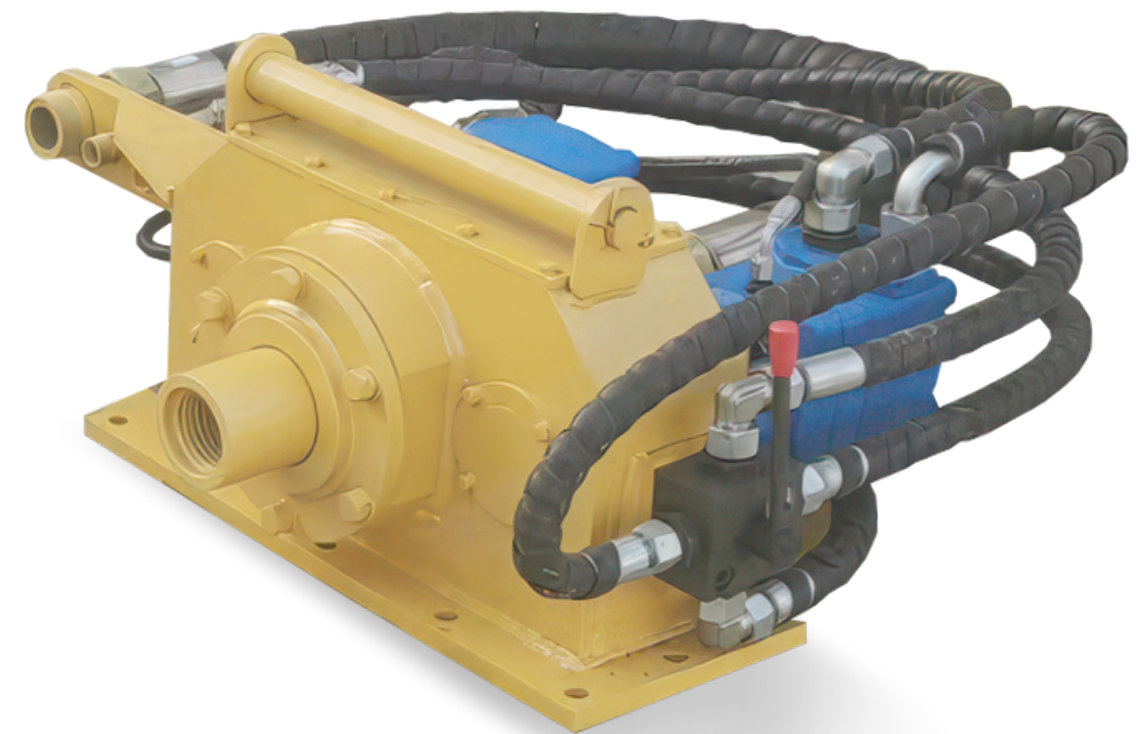


**“THE KING OF DRILLING RIGS,
MAKE DRILLING SIMPLE”**



DRILL RIG ACCESSORIES—ROTARY HEAD

CHANGSHA DTH DRILL CONSTRUCTION MACHINERY CO., LTD

CHANGSHA DTH DRILL CONSTRUCTION MACHINERY CO.,LTD.



WHATSAPP



WECHAT

Address: The full 13th floor , Building T2, Greenland Intercity Space Station, No. 248 Huahou Road, Yuhua District, Changsha Area, China (Hunan) Pilot Free Trade Zone

Mobile/Whatsapp/WeChat: +86 15616202223

Email: lily@csdrill.com

Website: www.csdrill.com

Tel: +86 731 88333338

<https://dthdrill.en.alibaba.com/>

ABOUT CSDRILL GROUP

The King of Drilling Rigs, Make Drilling Simple



Changsha CSDRILL Group was established in June 2021 as a comprehensive service provider specializing in mining rigs and drilling tools. One of the company's founders is Professor Zhao Mingchun from Central South University, who has been recognized by Stanford University as one of the top 2% scientists in the world for three consecutive years (2022, 2023, and 2024). Under the leadership of Professor Zhao Mingchun, Changsha CSDRILL Group focuses on research in the field of "development and construction of high-performance, high-quality metal materials for extreme environments." This includes research directions such as "heat treatment processes and technologies for high-performance wear-resistant materials in mining machinery," "hydrogen embrittlement, hydrogen-induced delayed fracture, and fatigue properties of high-strength steels," and "preparation, key control processes, and microstructure and performance regulation of ultra-high-strength steels." The company maintains close scientific collaborations with renowned research institutions, including the Institute of Metal Research of the Chinese Academy of Sciences and the University of Queensland in Australia, and jointly trains master's and doctoral students, following a path of integrated industry-academia-research development.

Changsha CSDRILL Group has factories in Xiangtan, Yueyang, Yiyang, and Linyi, with its global sales office located on the entire 13th floor of Building T2 in Changsha Greenland Intercity Space Station. The company's CSDRILL brand products, including reverse circulation drills, core drills, multi-function drills (reverse circulation/core/water well), blasting drills, water well drills, tunnel drills, and drilling tools, are exported to over 80 countries and serve more than 100 mines worldwide.

The products of Changsha CSDRILL Group are suitable for various types of mines, with a focus on drilling solutions for gold, copper, bauxite, coal, and stone mines. They are widely adaptable to harsh environments such as plateaus, permafrost, and rainy regions. The company provides one-stop drilling solutions for exploration, blasting, mining, oil wells, slope protection, anchoring, tunneling, and pile foundation construction (including solar energy applications).

Changsha CSDRILL Group is committed to becoming the king of drilling rigs, making drilling simple!

Welcome to visit our factory!

BUSINESS AND PRODUCTION

01

Our global sales headquarters is strategically located on the 13th floor of the Greenland Changsha Intercity Space Station T2 building.

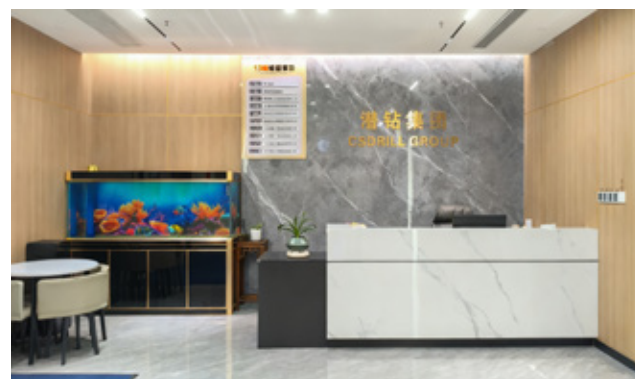
02

CSDRILL Group operates state-of-the-art manufacturing facilities in Xiangtan, Yueyang, Yiyang, and Linyi.

潜钻集团 CSDRILL GROUP



01 Sales Headquarters



02 Manufacturing Factory (Drilling Rig)



02 Manufacturing Factory (Drilling Tools)



ENTERPRISE STRENGTH



Top 2% Global Scientists

2022、2023 and 2024 Top 2% Global Scientists Selected by Stanford University in the United States.

20TH

20+Yrs Experience

20+ years of production experience of DTH drilling tools.

One Shop



Online Shop

One-stop Solution

water well drilling machines, coring drilling machines, reverse circulation drilling machines, tunnel drilling machines, and drilling tools.



Key Projects in Hunan

The new factory is a key project in Hunan Province.



3A Credit Certification

Certifies 3A credit by People's Bank of China.



School enterprise cooperation

Research and development team of School of Materials Science and Engineering, Central South University.



BUSINESS SCOPE



80⁺

CSDRILL Group's drilling rigs and drilling tools are exported to more than 80 countries and can fully adapt to a variety of extreme climatic and geographical conditions such as permafrost, plateau altitude, and tropical rainy season.

100⁺

CSDRILL Group providing one-stop drilling service solutions for more than 100 gold mines, copper mines, bauxite mines and other mines.



The King of Drilling Rigs
Make Drilling Simple



Own Factory

20 years of experience in professional drilling rig R&D and manufacturing.



Customized

A variety of drilling rigs can be customized, including core drilling rigs, reverse circulation drilling rigs, blasting drilling rigs, tunnel drilling rigs, water well drilling rigs, etc.



Production Line

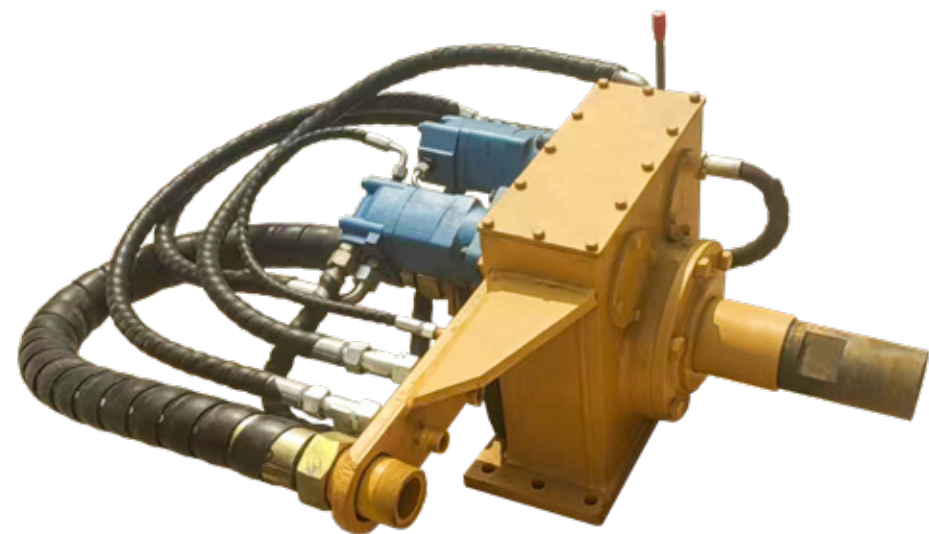
We have a dedicated production and processing line, which is equipped with several CNC machine tools and advanced guide rail grinders, large gantry planers, vertical machining centers, horizontal machining centers and welding robots.



Technical Support

We are online 24 hours a day to provide professional drilling rig knowledge answers and any consulting services.

i CS 200



i CS 300



Specification Parameter

Model/Item	Unit	CS200
Model	/	CS200
Drilling Depth	m	200
Rotary speed	rpm	60-120
Rotary Torque	N.m	5700
Hydraulic Motor	/	BM5-305
Weight	kg	220
Dimensions(L*W*H)	mm	900x650x570

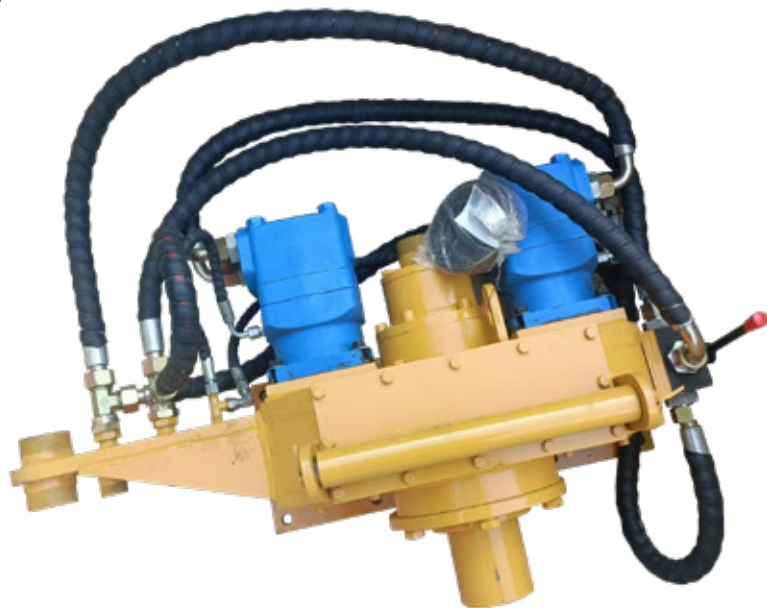
● Note: Photographs and illustrations, parameters are for reference only and do not represent the standard version of the equipment. The company reserves the right to make changes without prior notice.

Specification Parameter

Model/Item	Unit	CS300
Model	/	CS300
Drilling Depth	m	300
Rotary speed	rpm	70-140
Rotary Torque	N.m	9700
Hydraulic Motor	/	BMV-310
Weight	kg	275
Dimensions(L*W*H)	mm	1100x850x550

● Note: Photographs and illustrations, parameters are for reference only and do not represent the standard version of the equipment. The company reserves the right to make changes without prior notice.

i CS 400

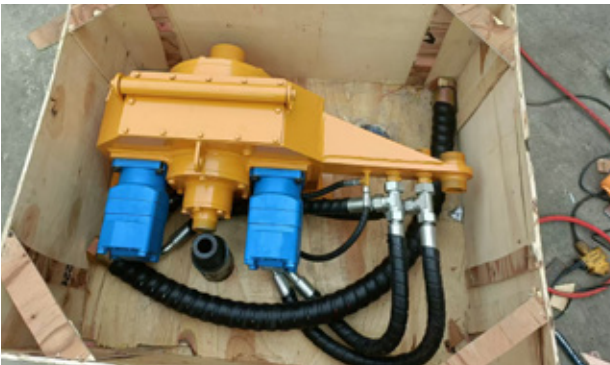
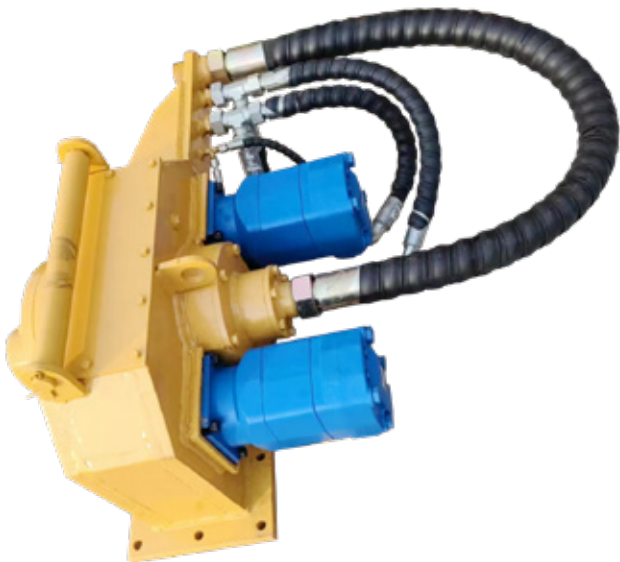


Specification Parameter

Model/Item	Unit	CS400
Model	/	CS400
Drilling Depth	m	400
Rotary speed	rpm	70-140
Rotary Torque	N.m	12000
Hydraulic Motor	/	BMV-400
Weight	kg	280
Dimensions(L*W*H)	mm	1100x850x550

● Note: Photographs and illustrations, parameters are for reference only and do not represent the standard version of the equipment. The company reserves the right to make changes without prior notice.

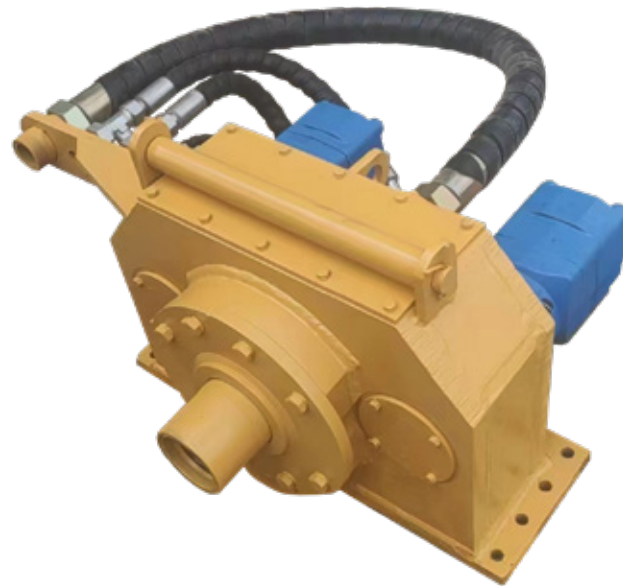
i CS 600



Specification Parameter

Model/Item	Unit	CS600
Model	/	CS600
Drilling Depth	m	600
Rotary speed	rpm	70-140
Rotary Torque	N.m	7750
Hydraulic Motor	/	BMV-500
Weight	kg	400
Dimensions(L*W*H)	mm	1150x750x500

● Note: Photographs and illustrations, parameters are for reference only and do not represent the standard version of the equipment. The company reserves the right to make changes without prior notice.



Specification Parameter

Model/Item	Unit	CS1000
Model	/	CS1000
Drilling Depth	m	1000
Rotary speed	rpm	70-140
Rotary Torque	N.m	16000
Hydraulic Motor	/	BM6-1000
Weight	kg	500
Dimensions(L*W*H)	mm	1300x900x600

● Note: Photographs and illustrations, parameters are for reference only and do not represent the standard version of the equipment. The company reserves the right to make changes without prior notice.

DELIVERY CASES

The King of Drilling Rigs,Make Drilling Simple

