

**“THE KING OF DRILLING RIGS,
MAKE DRILLING SIMPLE”**



CS DRILL WATER FINDER SERIES PRODUCT

CHANGSHA DTH DRILL CONSTRUCTION MACHINERY CO., LTD

CHANGSHA DTH DRILL CONSTRUCTION MACHINERY CO.,LTD.



WHATSAPP



WECHAT

Address: The full 13th floor , Building T2, Greenland Intercity Space Station , No. 248 Huahou Road, Yuhua District, Changsha Area, China (Hunan) Pilot Free Trade Zone

Mobile/Whatsapp/WeChat: +86 15616202223

Email: lily@csdrill.com

Website: www.csdrill.com

Tel: +86 731 88333338

<https://dthdrill.en.alibaba.com/>

ABOUT CSDRILL GROUP

The King of Drilling Rigs, Make Drilling Simple



Changsha CSDRILL Group was established in June 2021 as a comprehensive service provider specializing in mining rigs and drilling tools. One of the company's founders is Professor Zhao Mingchun from Central South University, who has been recognized by Stanford University as one of the top 2% scientists in the world for three consecutive years (2022, 2023, and 2024). Under the leadership of Professor Zhao Mingchun, Changsha CSDRILL Group focuses on research in the field of "development and construction of high-performance, high-quality metal materials for extreme environments." This includes research directions such as "heat treatment processes and technologies for high-performance wear-resistant materials in mining machinery," "hydrogen embrittlement, hydrogen-induced delayed fracture, and fatigue properties of high-strength steels," and "preparation, key control processes, and microstructure and performance regulation of ultra-high-strength steels." The company maintains close scientific collaborations with renowned research institutions, including the Institute of Metal Research of the Chinese Academy of Sciences and the University of Queensland in Australia, and jointly trains master's and doctoral students, following a path of integrated industry-academia-research development.

Changsha CSDRILL Group has factories in Xiangtan, Yueyang, Yiyang, and Linyi, with its global sales office located on the entire 13th floor of Building T2 in Changsha Greenland Intercity Space Station. The company's CSDRILL brand products, including reverse circulation drills, core drills, multi-function drills (reverse circulation/core/water well), blasting drills, water well drills, tunnel drills, and drilling tools, are exported to over 80 countries and serve more than 100 mines worldwide.

The products of Changsha CSDRILL Group are suitable for various types of mines, with a focus on drilling solutions for gold, copper, bauxite, coal, and stone mines. They are widely adaptable to harsh environments such as plateaus, permafrost, and rainy regions. The company provides one-stop drilling solutions for exploration, blasting, mining, oil wells, slope protection, anchoring, tunneling, and pile foundation construction (including solar energy applications).

Changsha CSDRILL Group is committed to becoming the king of drilling rigs, making drilling simple!

Welcome to visit our factory!

BUSINESS AND PRODUCTION

01

Our global sales headquarters is strategically located on the 13th floor of the Greenland Changsha Intercity Space Station T2 building.

02

CSDRILL Group operates state-of-the-art manufacturing facilities in Xiangtan, Yueyang, Yiyang, and Linyi.

潜钻集团 CSDRILL GROUP



《《 Sales Headquarters



《《 Manufacturing Factory
(Drilling Rig)



Manufacturing Factory
(Drilling Tools) 《《



ENTERPRISE STRENGTH



Top 2% Global Scientists

2022、2023 and 2024 Top 2% Global Scientists Selected by Stanford University in the United States.



20+Yrs Experience

20+ years of production experience of DTH drilling tools.



One-stop Solution

water well drilling machines, coring drilling machines, reverse circulation drilling machines, tunnel drilling machines, and drilling tools.



Key Projects in Hunan

The new factory is a key project in Hunan Province.



3A Credit Certification

Certifies 3A credit by People's Bank of China.



School enterprise cooperation

Research and development team of School of Materials Science and Engineering, Central South University.



BUSINESS SCOPE



80⁺

CSDRILL Group's drilling rigs and drilling tools are exported to more than 80 countries and can fully adapt to a variety of extreme climatic and geographical conditions such as permafrost, plateau altitude, and tropical rainy season.

100⁺

CSDRILL Group providing one-stop drilling service solutions for more than 100 gold mines, copper mines, bauxite mines and other mines.



The King of Drilling Rigs
Make Drilling Simple



Own Factory

20 years of experience in professional drilling rig R&D and manufacturing.



Customized

A variety of drilling rigs can be customized, including core drilling rigs, reverse circulation drilling rigs, blasting drilling rigs, tunnel drilling rigs, water well drilling rigs, etc.



Production Line

We have a dedicated production and processing line, which is equipped with several CNC machine tools and advanced guide rail grinders, large gantry planers, vertical machining centers, horizontal machining centers and welding robots.



Technical Support

We are online 24 hours a day to provide professional drilling rig knowledge answers and any consulting services.

Speedy Version Mutil-channel Water Detector

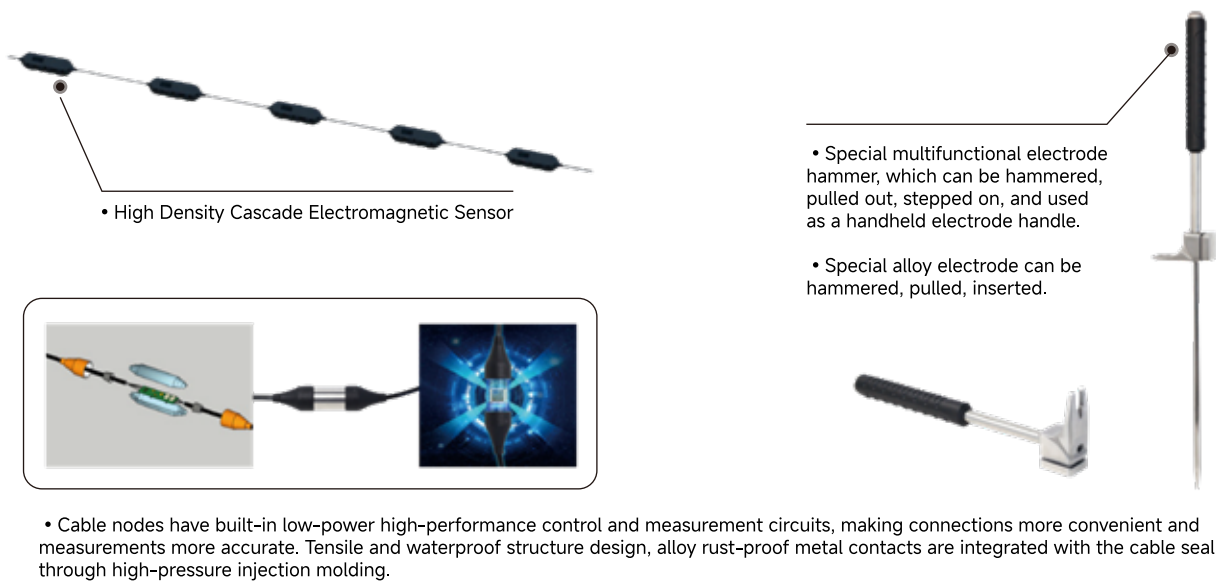
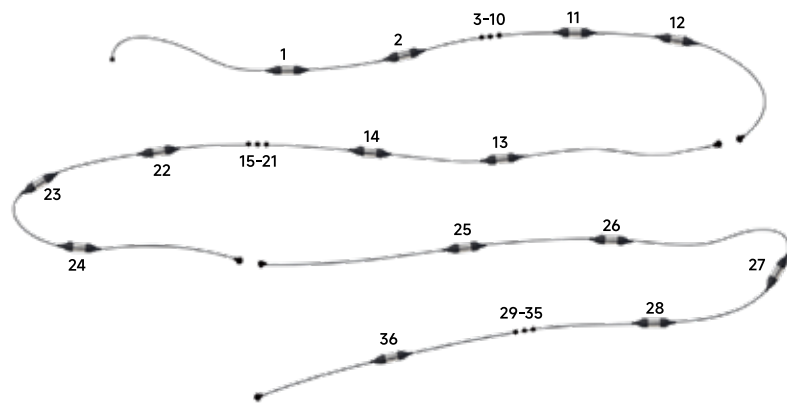


Speedy version water detector is an advanced water detector with fast measurement speed and higher accuracy. The appearance adopts waterproof and anti-slip material and structure, which can adapt to various harsh environments. And the measurement lines and spare parts have been improved, high-density cascade cables can be configured for expansion and upgrade. The maximum number of channels can be configured to 60 channels, and a measurement can be completed quickly in 10 seconds. Compared with 16/32-channel water detectors, the measurement efficiency of the speedy version water detector is increased by 10 times, and the use of high-density cascade cables can meet the needs of quickly completing large-scale measurement projects.

Instrument features:

- 01. Compatible with 1, 12, 24, 36, 48, and 60 channels, single-channel and multi-channel measurement in one machine.
- 02. Depth segments are optional, with optional start and end depths within the maximum depth range.
- 03. Magnetic multi-function connection port (charging, data transfer, connecting sensors and MN cables)
- 04. Built-in high-performance lithium battery with 10 hours of standby time, can be connected to a universal mobile phone charger and power bank.
- 05. Support wireless screen casting and multi-screen interaction

High Density Cascade Cable



Specifications

	ADMT-180ZN	ADMT-300ZN	ADMT-600ZN	ADMT-900ZN	ADMT-1200ZN
Max Depth	≤180	≤300	≤600	≤900	≤1200
Scan Interval	5m			10m	
Channel Options	Varying channel options share one single console (extension to multi-channels just by increasing accessories and upgrading to enhanced cable). Multi-channel options support both MN and TT				
Sensing Mode	MN/TT				
Frequency Range	1-5000HZ				
Filtering	FFT Smart				
Discrim	0.01mV±2%				
Acquisition Time	10s				
Connections	All-in-one magnetic connection (charging, USB and single input all in one), wifi, bluetooth 4.0				
Display	7 "IPS high brightness touch screen, Automatic screen rotation				
Resolution	1024*800				
OS	Android 8.1				
CPU	ROCKCHIP Quad-core Cortex-A17				
GPU	Mali T746				
RAM	DDR3/2GB				
Storage	16GB				
Core Features	All channel options in one, Real-time curve/contour mapping, All-device interconnection, Free software upgrade				
Other Features	Camera (incl. fill flash), Multi-device mirroring, Water and dust proof				
Battery	6000mA/H				
Console Weight	< 1kg				

Golden Rod Water Detector



Key Advantages:

- 01. Fully Wireless**
Highly integrated main unit and sensors. Fully wireless, single-person operation. Unrestricted by terrain and ground conditions.
- 02. Smart Interaction**
Operate via wireless connection to smartphones, tablets, or a dedicated controller. Compatible with 5-10.1 inch touchscreens.
- 03. Automatic Mapping**
Automatically generates and displays 2D/3D results, curve plots, and the operation interface.
- 04. Smart & Precise**
Features optional electromagnetic probes and MN electrodes. Utilizes patented technology for intelligent, high-precision measurement.

The Golden Rod Water detector is a highly integrated I&T smart water-finding instrument that solves the trouble of wiring and pulling, the water-finding instrument in the past. The height of the TT sensor, MN electrode, battery and wireless communication module is in a 7cm ABS tube, which is named after the legendary golden hoop. Is in On the basis of MT electromagnetic method, time-sharing measurement of natural electric field or electromagnetic field strength can reflect the change of underground resistivity, so as to analyze and judge the level of groundwater. Related information such as location and depth. Wirelessly connect mobile phones, tablet computers and dedicated control hosts to control and automatically create maps. The golden hoop has a built-in lithium battery, which is easy to boot Measurable, without any connection, to achieve full wireless operation.

Specifications

- Completely wireless simple operation
- Real-time imaging , mobile phone control
- Intelligent and accurate with adjustable depth

Model	Depth (m)	Length(cm)	Measuring Model
ADMT-300H	≤300	47	MN
ADMT-300HT2	≤300	86	MN/TT
ADMT-300HT3	≤300	100	MN/TT
ADMT-800HT2	≤800	86	MN/TT
ADMT-800HT3	≤800	100	MN/TT



Single Channel Real-time Imaging Water Detector



Key Advantages:

01. Automatic imaging:

Real-time 2D, 3D and curve images can be generated on the 7-inch Android system touch screen.

02. Accurate and stable

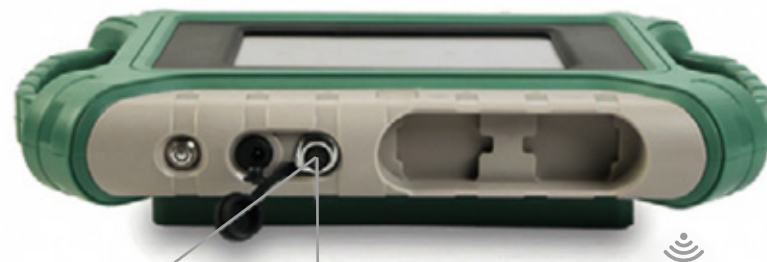
Iterative upgrade for more than 40 years, high measurement accuracy and stable performance.

03. Three screen intercommunication

instrument screen, mobile phone screen, computer screen intercommunication.

04. Intelligent and flexible

MN electrode and TT probe can be switched for measurement, wireless probe or Golden Rod for finding water is optional.



MN Electrode Measurement

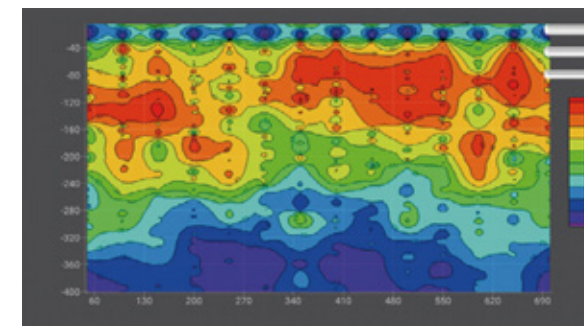
Classic 20-meter cable connection
Ground electrodes for immediate
measurement
Recommended two-person operation
[Standard Configuration]

Wired Electromagnetic Probe

Adapts to virtually any surface
Including concrete, bedrock, and frozen ground
Conduct single-operator measurements with
minimal setup
[Optional]

Wireless Telescopic Antenna

Fully wireless operation, adaptable to all
surfaces including concrete, rock, and loose
soil. Measurements can be performed by a
single operator.
[Optional]



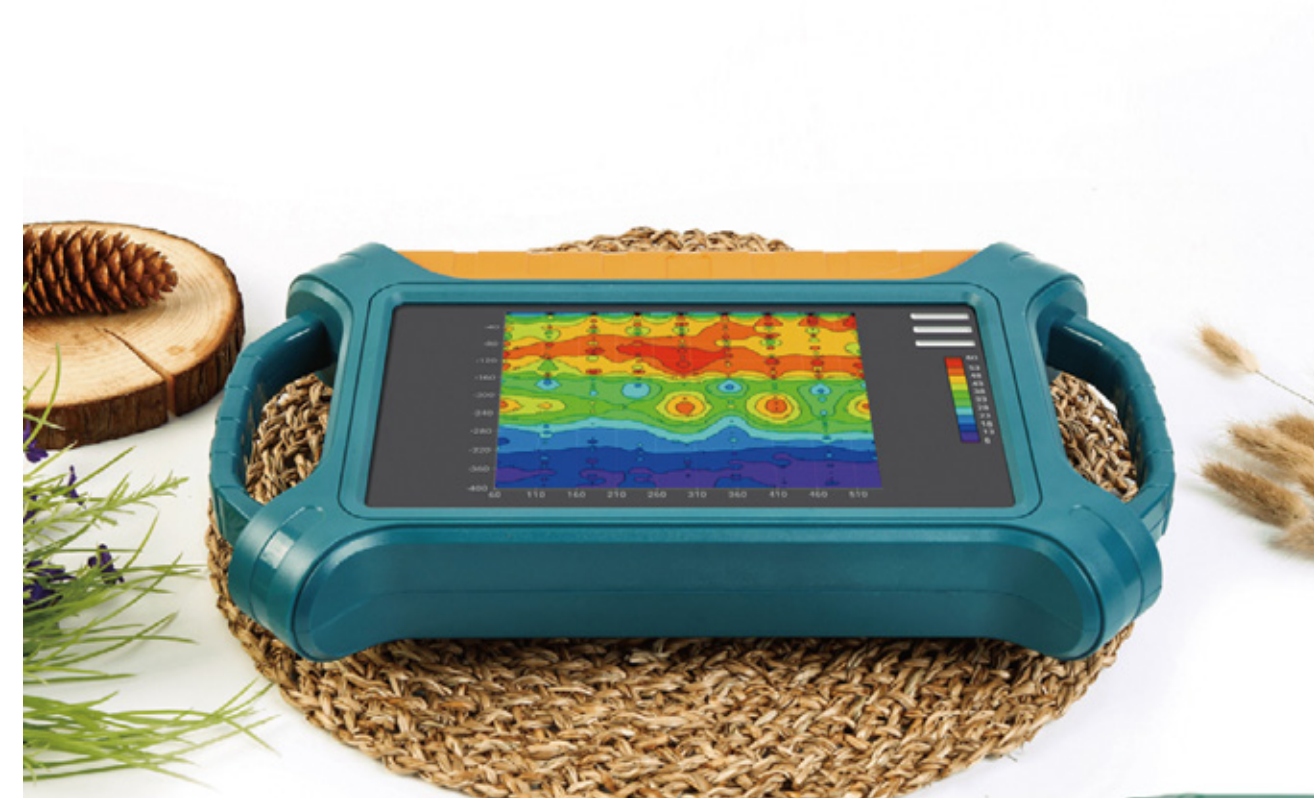
- Adjustable depth, precise and stable
- 7 inch IPS wide viewing angle visual touch screen
- On-site drawing, multiple connection methods

Specifications

Model	Adjustable depth (m)	Measuring Model
ADMT-300S-X	100/200/300	MN/TT
ADMT-600S-X	100/200/300/400/500/600	MN/TT

ADMT-300S-X/600S single-channel real-time imaging water detector is based on the MT electromagnetic method. It measures the natural electric field or electromagnetic field strength in a time-sharing manner to reflect the change of underground resistivity, so as to analyze and judge the location and depth of groundwater. Exquisite and atmospheric appearance, standard 7-inch wide-angle touch screen real-time imaging, intelligent and precise, depth adjustable. Three measurement modes like standard MN electrode measurement, optional wired probe, and wireless connection to water detector gold bar series.

16 Channel High Density Water Detector



The accuracy rate is 30% higher than that of a single channel, and the efficiency is 3 times higher!

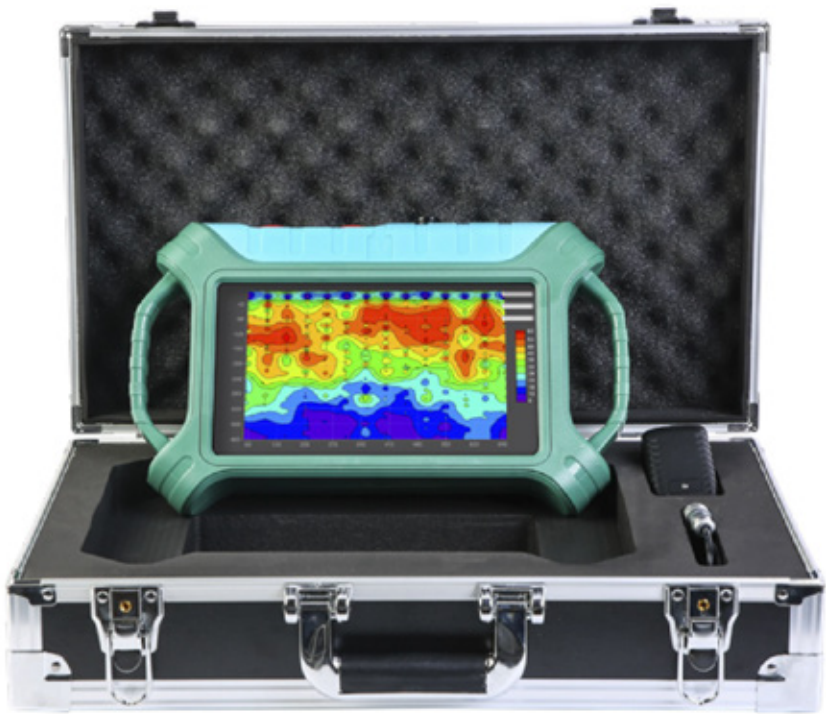
16 (32) channels are used for simultaneous input measurement to obtain a relatively stable field source, which solves the defect of the natural electric field changing at any time, on the basis of the MT electromagnetic method, the natural electric field or electromagnetic field strength is measured in time to reflect the change of underground resistivity, thereby To analyze and judge related information such as the location and depth of groundwater, Reduce the error of MN electrode movement, repeat the measurement many times, and have good consistency of the profile.

Specifications

- Depth adjustable, channel count selectable.
- Highly precise and stable with excellent consistency.
- Real-time imaging, high-density input.

Model	Depth (m)
ADMT-300SX-16D	100/200/300
ADMT-500SX-16D	100/200/300/400/500
ADMT-1200SX-16D	100/200/300/400/500/600/800/1200
ADMT-2000SX-16D	100/200/300/400/500/600/800/1200/2000
ADMT-3000SX-16D	200/300/400/500/600/800/1200/2000/3000

32 Channel High Density Water Finder



The accuracy rate is 50% higher than that of a single channel,and the efficiency is increased by 6 times!

The appearance is exquisite, the standard 10.1-inch wide-angle touch screen real-time imaging, intelligent and precise, the depth can be adjusted. Standard configuration of 16 (32) channel MN electrode measurement, three measurement modes such as wired probe and wireless connection to water detector gold rod are optional. Obtained a number of invention patents, especially the “geophysical prospecting method and measurement device for correction of the earth's electromagnetic field source”, which solves the shortcomings of inconsistency and change of the natural electric field source intensity.

Specifications

- Depth adjustable, channel count selectable.
- Highly precise and stable with excellent consistency.
- Real-time imaging, high-density input.

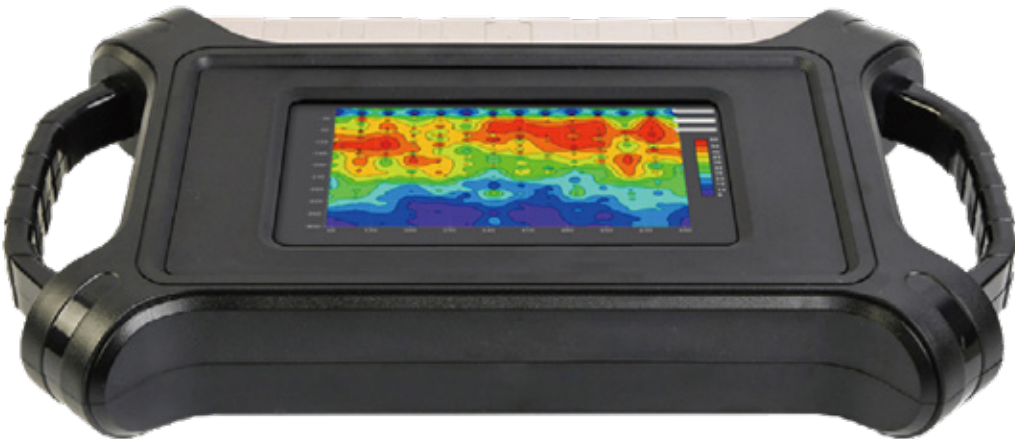
Model	Depth (m)
ADMT-400SX-32D	100/200/300/400
ADMT-600SX-32D	100/200/300/400/500/600
ADMT-1200SX-32D	100/200/300/400/500/600/800/1200
ADMT-3000SX-32D	100/200/300/400/500/600/800/1200/2000/3000
ADMT-4000SX-32D	100/200/300/400/500/600/800/1200/2000/3000/4000

ADMT-200AX&ADMT-500AX
—Professional version MT water detector



Key Advantages:

- 01. Accurate and stable:
Iterative updated, precise and stable for more than 40 years.
 - 02. Two parameters
MN/TT measures electromagnetic and electric field signals respectively.
 - 03. Operational intelligence
data sharing, optional wireless probe or golden hoop data.
- Adjustable depth,precise and stable;7 inch IPS wide viewing angle visual touch screen; Multiple connection methods such as serial port/Bluetooth/WiFi; On-site drawing, removable battery



The ADMT-200AX/500AX single-channel MT electromagnetic instrument simplifies the MT electromagnetic method to measure natural electric or electromagnetic fields in time sharing, making the instrument smart, portable, and convenient to carry, The standard MN electrode measures the MT electric field, and an electromagnetic probe can also be used to measure the MT electromagnetic field, which can reflect the inversion of the apparent resistivity changes of different underground geological bodies. It has characteristics with exquisite appearance, standard 7-inch wide-angle touch screen realtime imaging, and it is intelligent and precise, and its depth adjustable.

Specifications

	ADMT-200AX	ADMT-500AX
Max Depth	≤200m	≤500m
Optional depth	5/10/20/40/60/100/200m	60/100/200/300/400/500m
Connection method	Serial port, Wifi, Bluetooth 4.0, USB	
Display screen	7-inch IPS wide-angle 178°visible touch screen	
Operating system	Android 6.0.1	
CPU	ARM Cortex-A7 8 core CPU 2.0Hz	
The main function	Depth optional, real-time 2D/3D drawingbattery can be removable.	
Measurement mode	MN/TT	
Measuring range	±5V	
Frequency Range	1-8KHZ	
Frequency selective filtering	Preset frequency selection and intelligent frequency selectionanalog + data filtering 1-16 times superposition optional	
Resolution	0.1mV±2%	
Sampling time	100-360(s)	
Battery	600mA/H	
Host weight	2.3kg	

ADMT-200AX-16D& ADMT-500AX-16D
—16 Channel High Density Professional T Electrical
Underground Water Detector



The 16 channel high-density MT electrical instrument adopts 1-16 channels for simultaneous input measurement, which solves the defect of MT field source changing at any time and obtains stable field source. Breaking through the depth limit of traditional high-density electrical method instrument. This instrument optimizes and upgrades the traditional MT electromagnetic method, the number of channels & electric field & electromagnetic field measurement mode is optional, and it can also be equipped with a high-performance electromagnetic probe to do two-magnetic and two-electric MT measurement.



Specifications

	ADMT-200AX-16D	ADMT-500AX-16D
Max Depth	≤200m	≤500m
Channel Input	16 channels are input at the same time, and the maximum electrode spacing is 5m	
Channel selection	1-14 Channels	
Optional depth	5/10/20/40/60/100/200m	60/100/200/300/400/500m
Depth layering	10-100	
Connection method	Serial port, Wifi, Bluetooth 4.0, USB	
Operation display	10.1 inch IPS wide-angle 178° visible touch screen(1024x600)	
Operating system	Android6.0.1 running memory 1G memory 8G(expandable 128G)	
CPU	ARM Cortex-A7 8 core CPU 2.0Hz	
GPU	OpenGL ES 2.0	
The main function	Depth optional, real-time 2D/3D drawing,battery can be removable	
Frequency range	1-8K HZ	
Measurement mode	MN/TT	
Resolution	0.001mV+2%	
Sampling time	40-3600s	
Battery	900mA/H	
Host weight	3kg	



ADMT-1B Resistivity Meter:

Voltage measurement range: $\pm 2500\text{mV}$
 Voltage resolution: $0.0\mu\text{V}$
 Input impedance: $>50\text{MQ}$
 Apparent susceptibility measurement accuracy: $\pm 1\% \pm$
 l word SP compensation range: $+2500\text{mV}$
 Current channel: $6\text{A}, \pm 4\% \pm 1$ word
 Current resolution: $0.02\mu\text{A}$
 Suppression of 50Hz frequency interference: better
 than 80dB Maximum transmit power: 6000W
 Upper limit of supply voltage: 1000V
 Power supply waveform: pulse width 1-60 seconds,
 duty ratio 1:1, bipolar Power supply: 14.8V 5200mAh lithium
 battery



ADMT-6B Multi- Function DC Resistivity and IP (Induced Polarization) instruments:

It is used for the detailed survey and general survey exploration of various metal and non-metallic mines; the detailed survey and general survey exploration for detecting groundwater; the exploration of environmental protection survey, power design, engineering prospecting, geothermal prospecting, coal mine goaf, geological disaster Wait.

Main Feature

1. High precision: The latest circuit design, single-chip control, automatic noise reduction, and digital filtering greatly improve the measurement accuracy and stability.
2. Simple operation: Humanized man-machine interface, built-in formula calculation of various devices, direct reading VP, IP, SP, RO.M, TH and other related parameters.
3. Many parameters: VP, IP, SP, Ro, M, TH and other related parameters can be measured.
4. Complete equipment: ten types of equipment including four-pole sounding, intermediate gradient, joint profile, five-pole, and three-pole.

